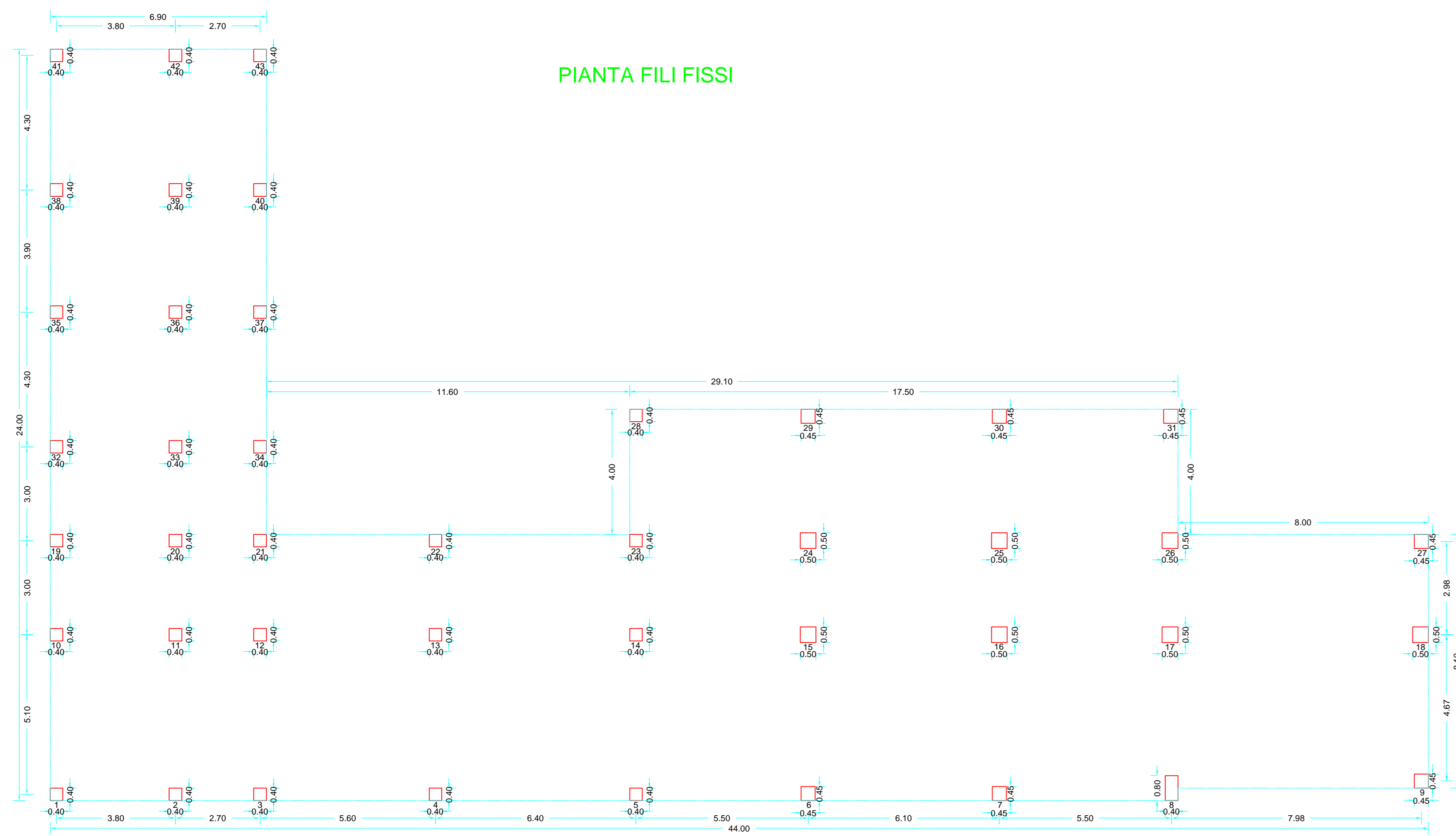
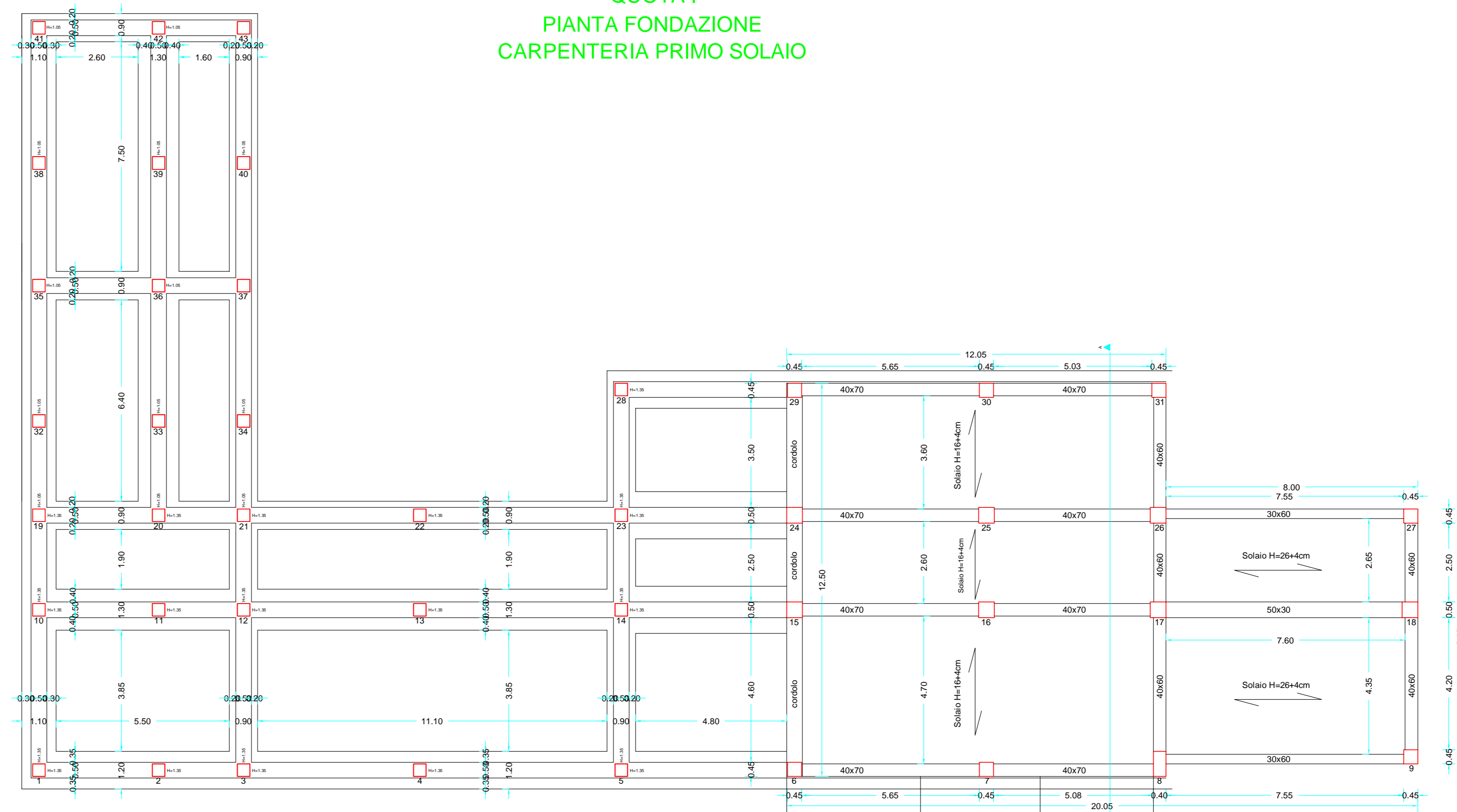


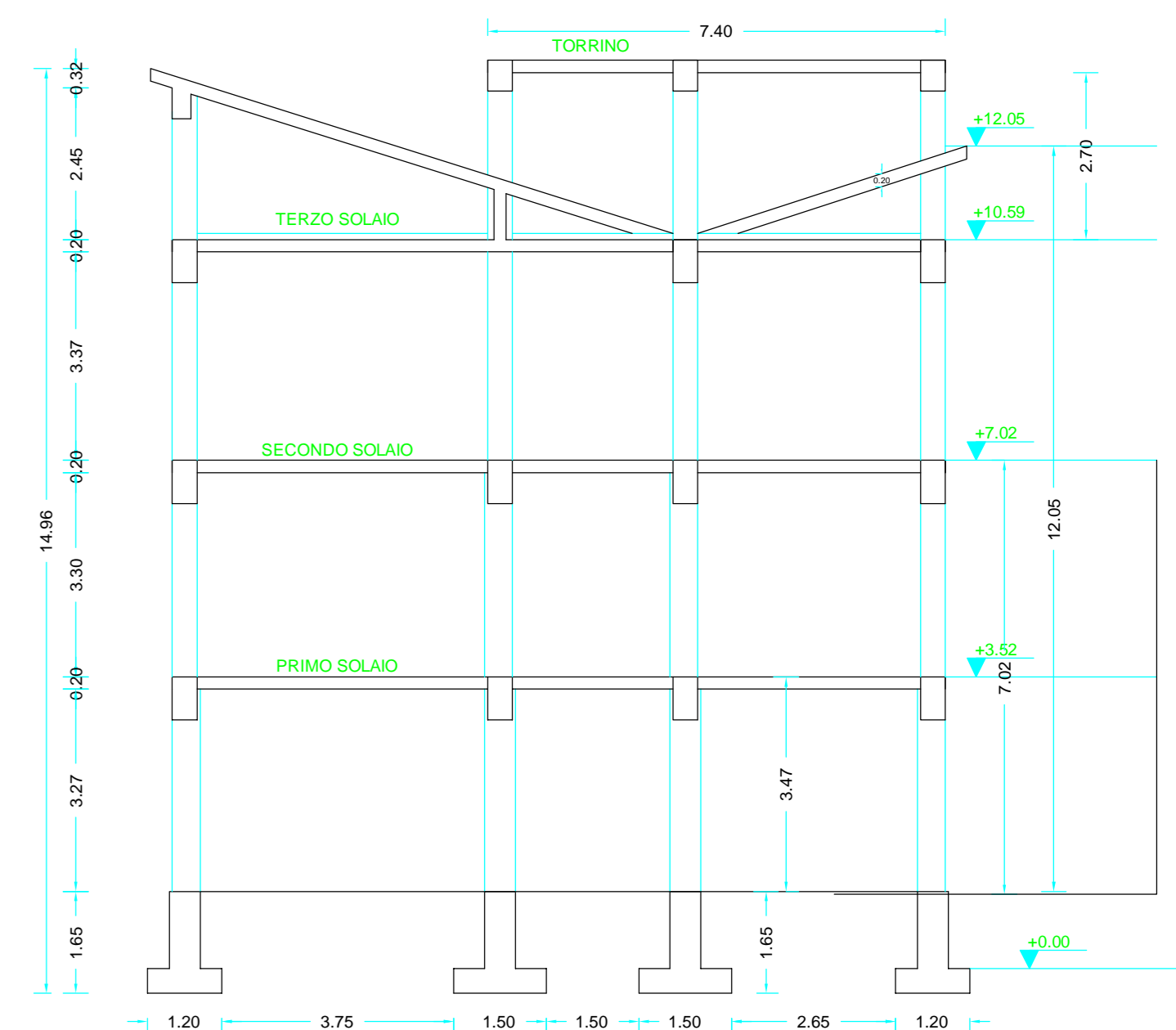
PIANTA FILI FISSI



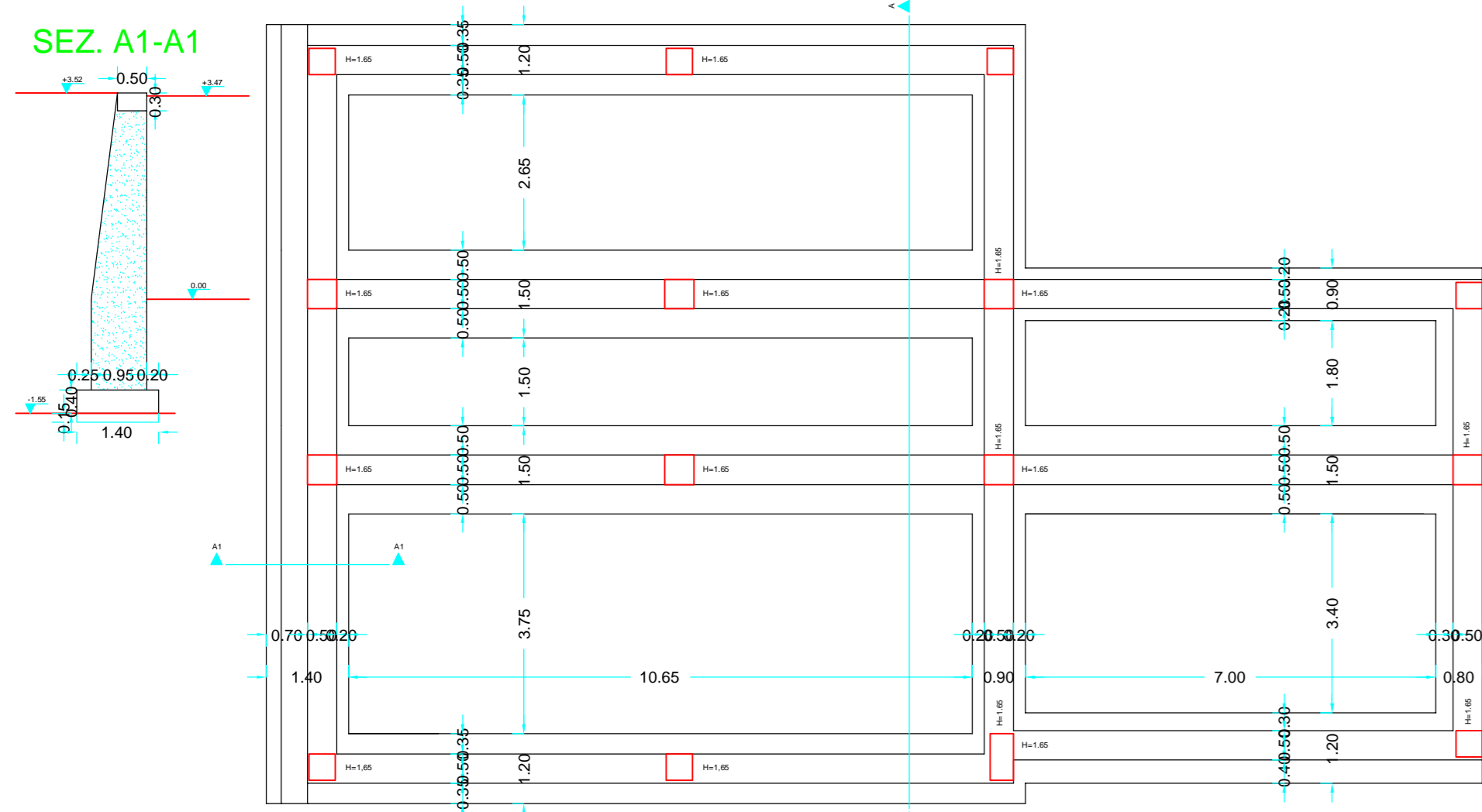
QUOTA I  
PIANTA FONDAZIONE  
CARPENTERIA PRIMO SOLAIO



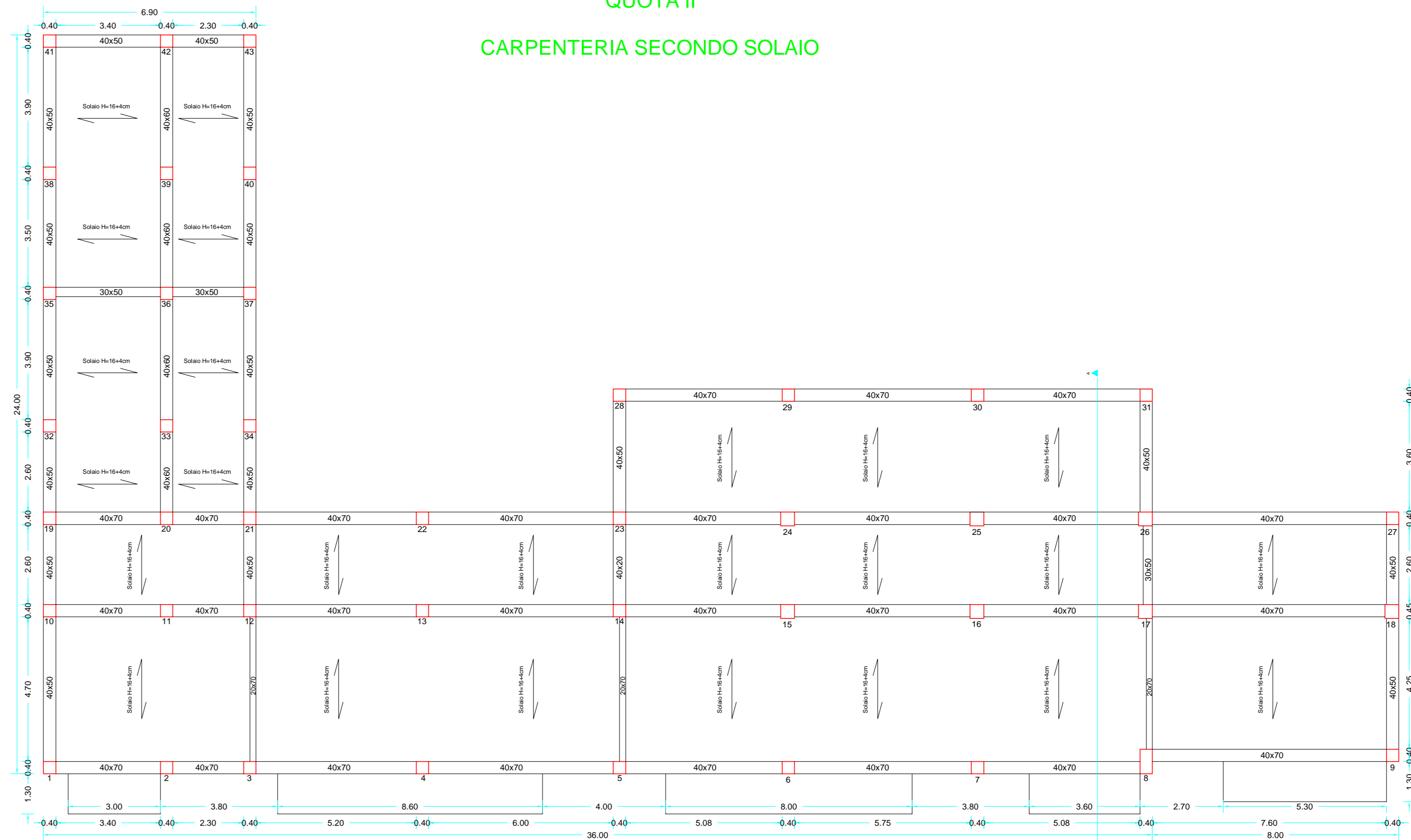
SEZIONE A - A



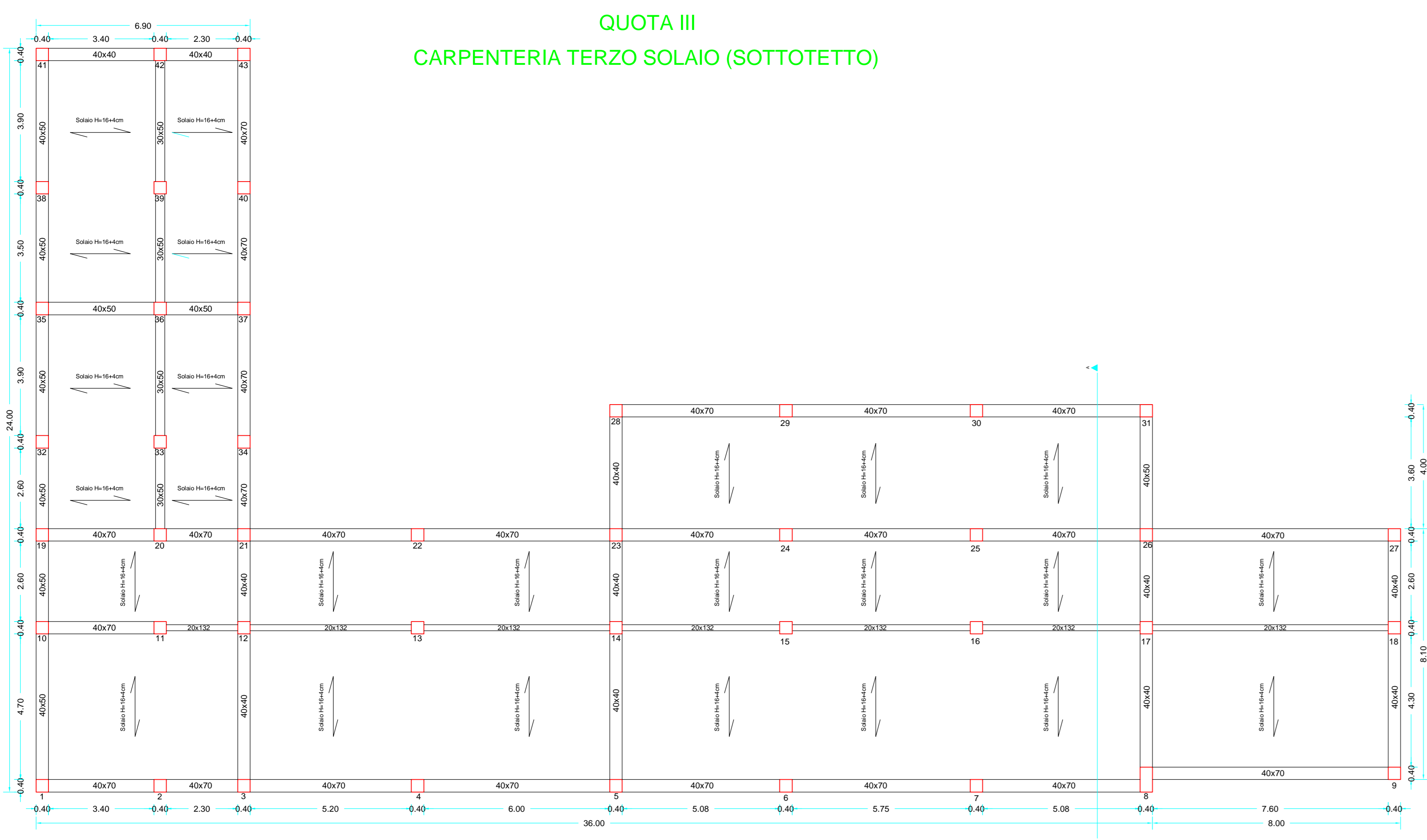
PIANTA FONDAZIONE  
QUOTA 0



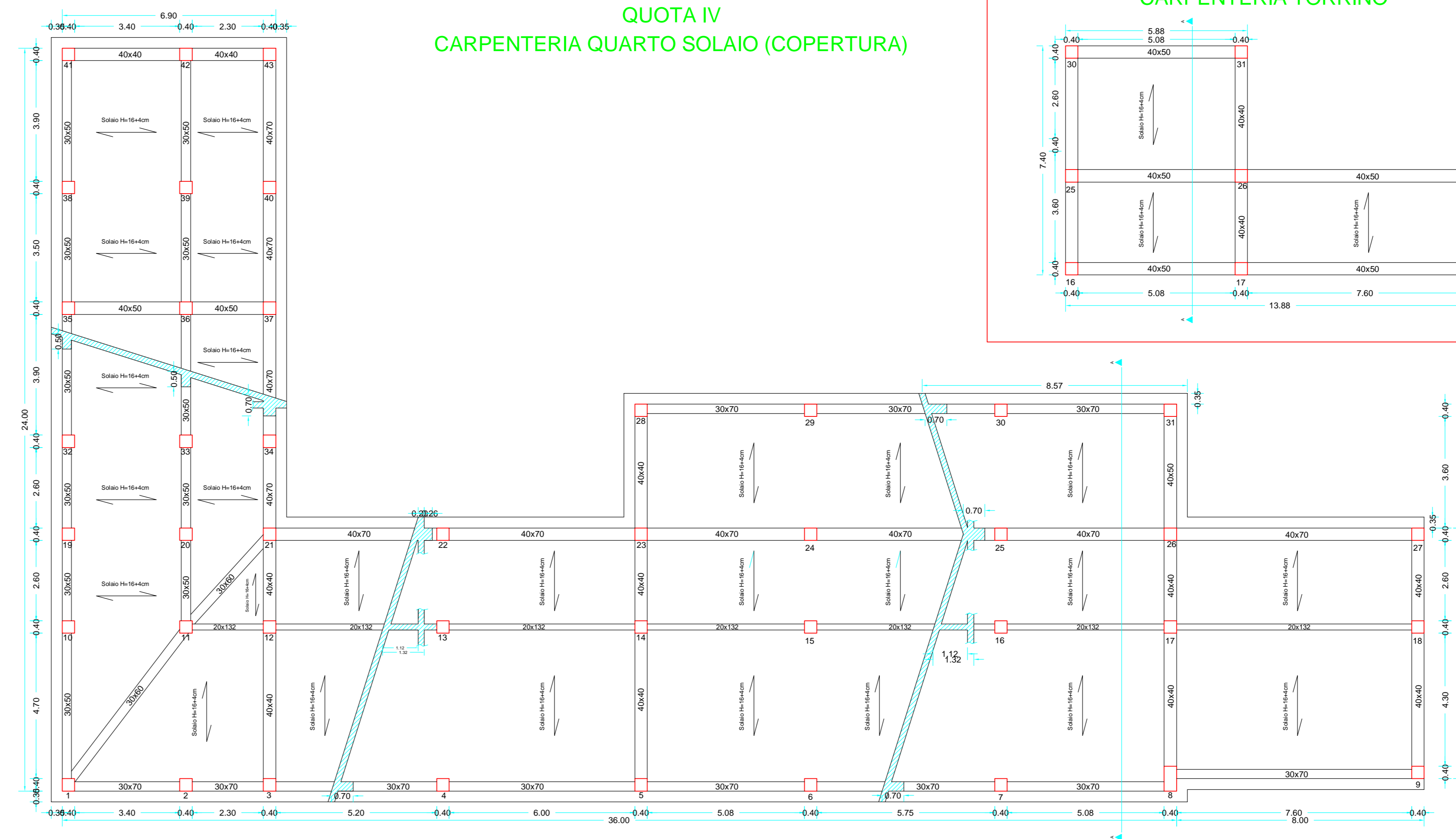
QUOTA II  
CARPENTERIA SECONDO SOLAIO



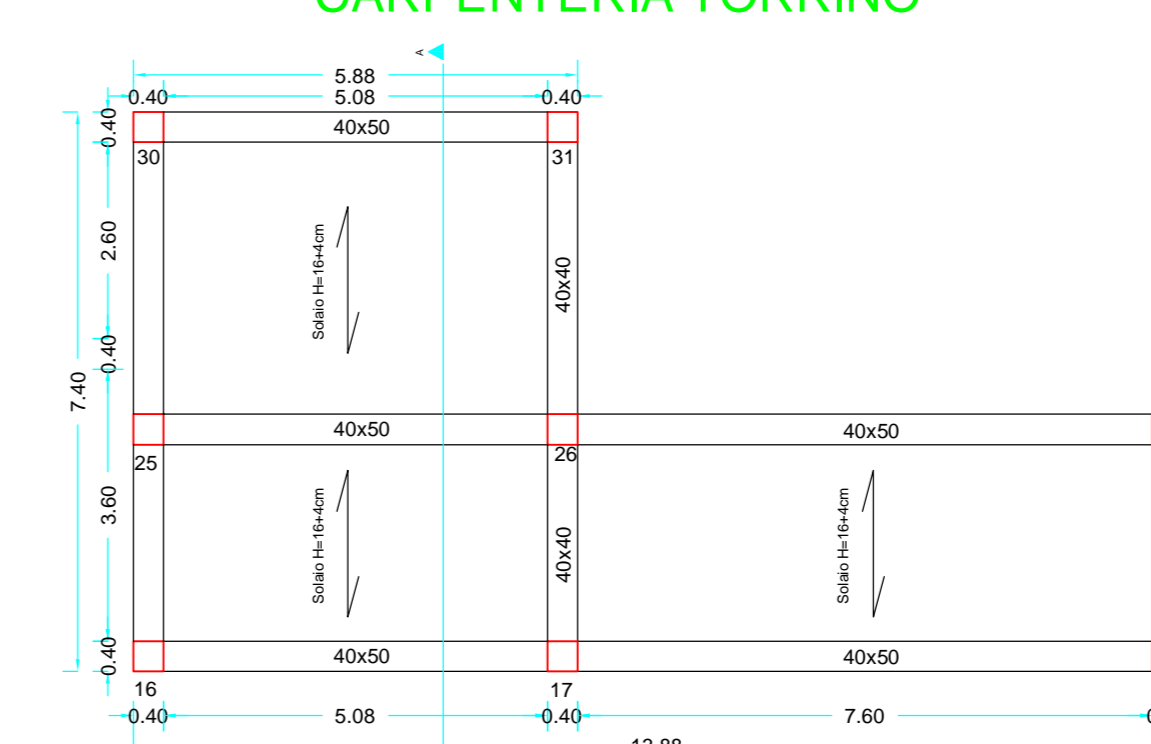
QUOTA III  
CARPENTERIA TERZO SOLAIO (SOTTOTETTO)



QUOTA IV  
CARPENTERIA QUARTO SOLAIO (COPERTURA)



CARPENTERIA TORRINO



CARPENTERIE STATO DI FATTO

PROGETTO DEFINITIVO/ESECUTIVO

PROGETTAZIONE STRUTTURALE

MARZO 2016

Studio tecnico per l'edilizia  
Ing. Roberto Calcagni  
Pollenza (Mc) 62010  
Via Carpanezzi, 8  
+39 0733 541789

Località: **POPOLI (PE)**  
Oggetto: **MIGLIORAMENTO SISMICO DEL  
CORPO C2 DEL P.O. DI POPOLI**

Committente: **USL PESCARA -  
U.O.C. SERVIZIO TECNICO PARTIMONIALE**

TAVOLA N.  
**S1**

REV.	DATA
0	
1	
2	
3	
4	
5	