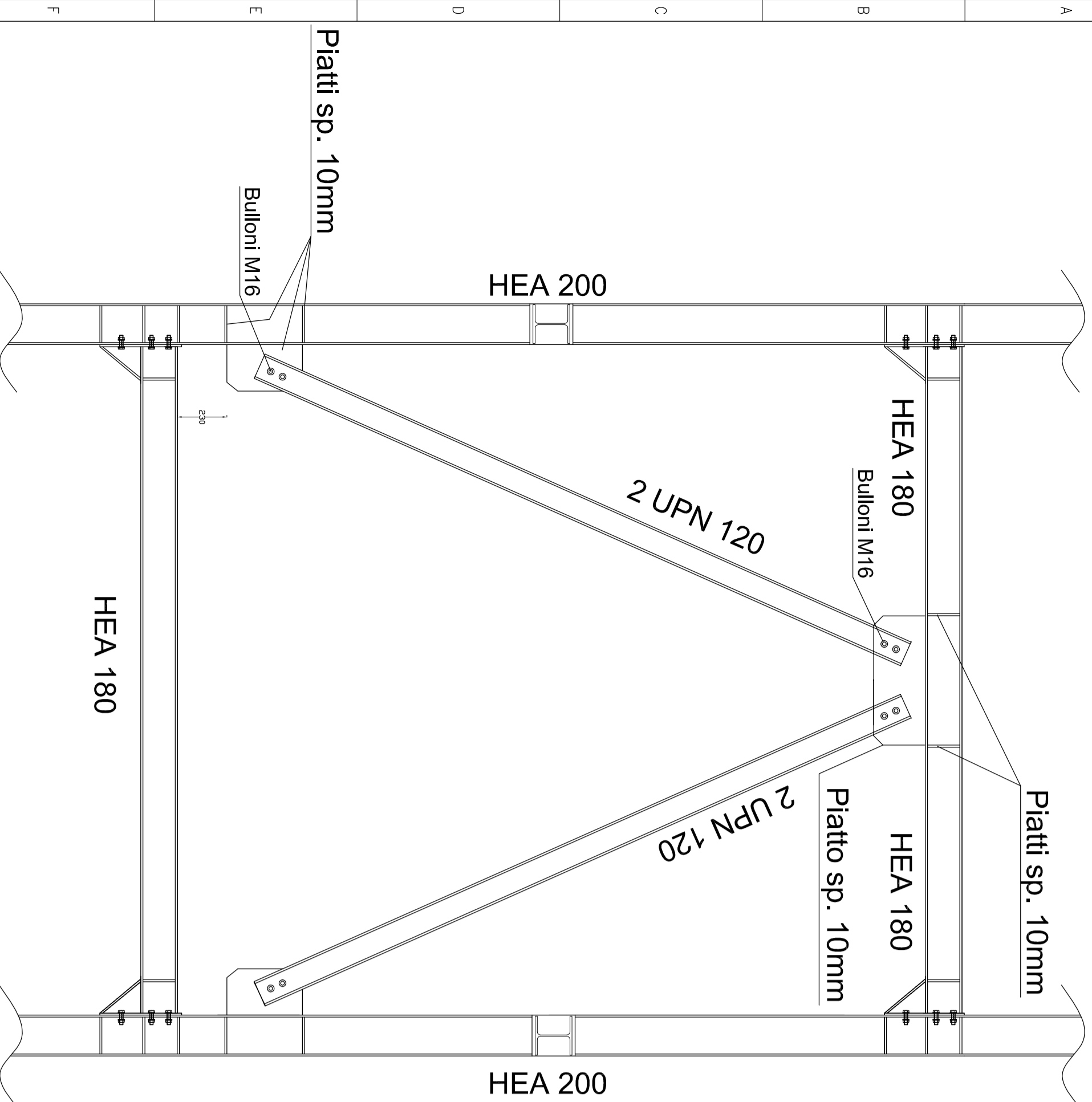
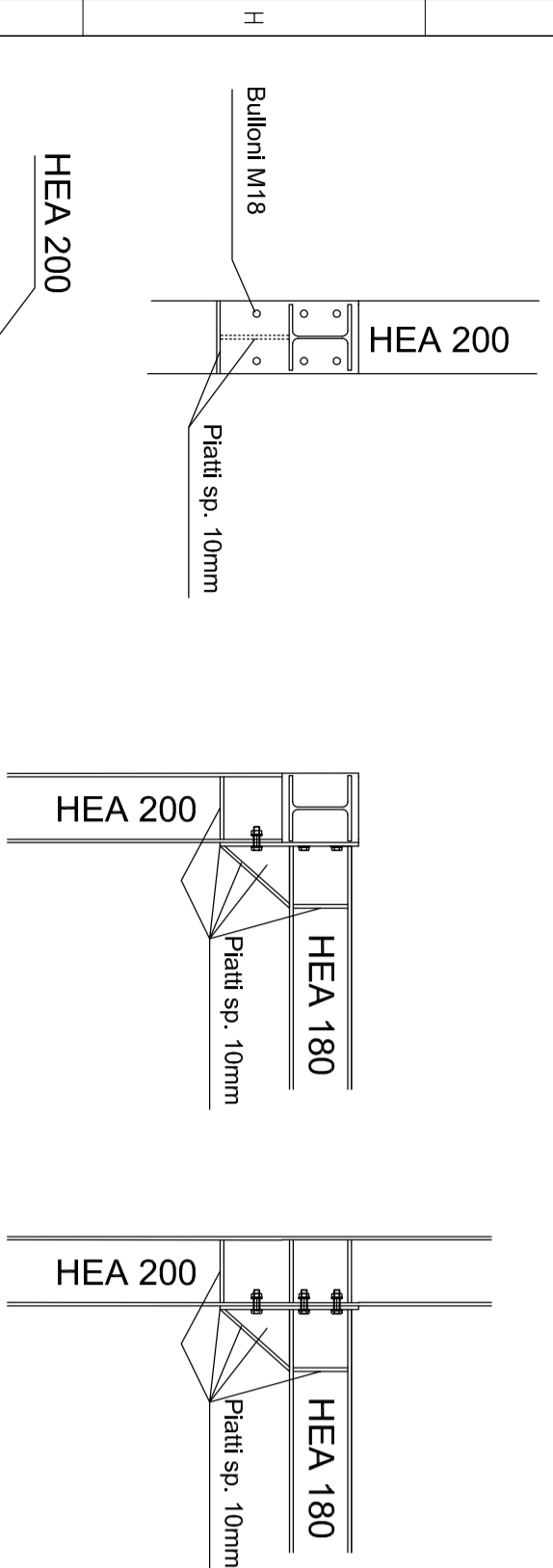


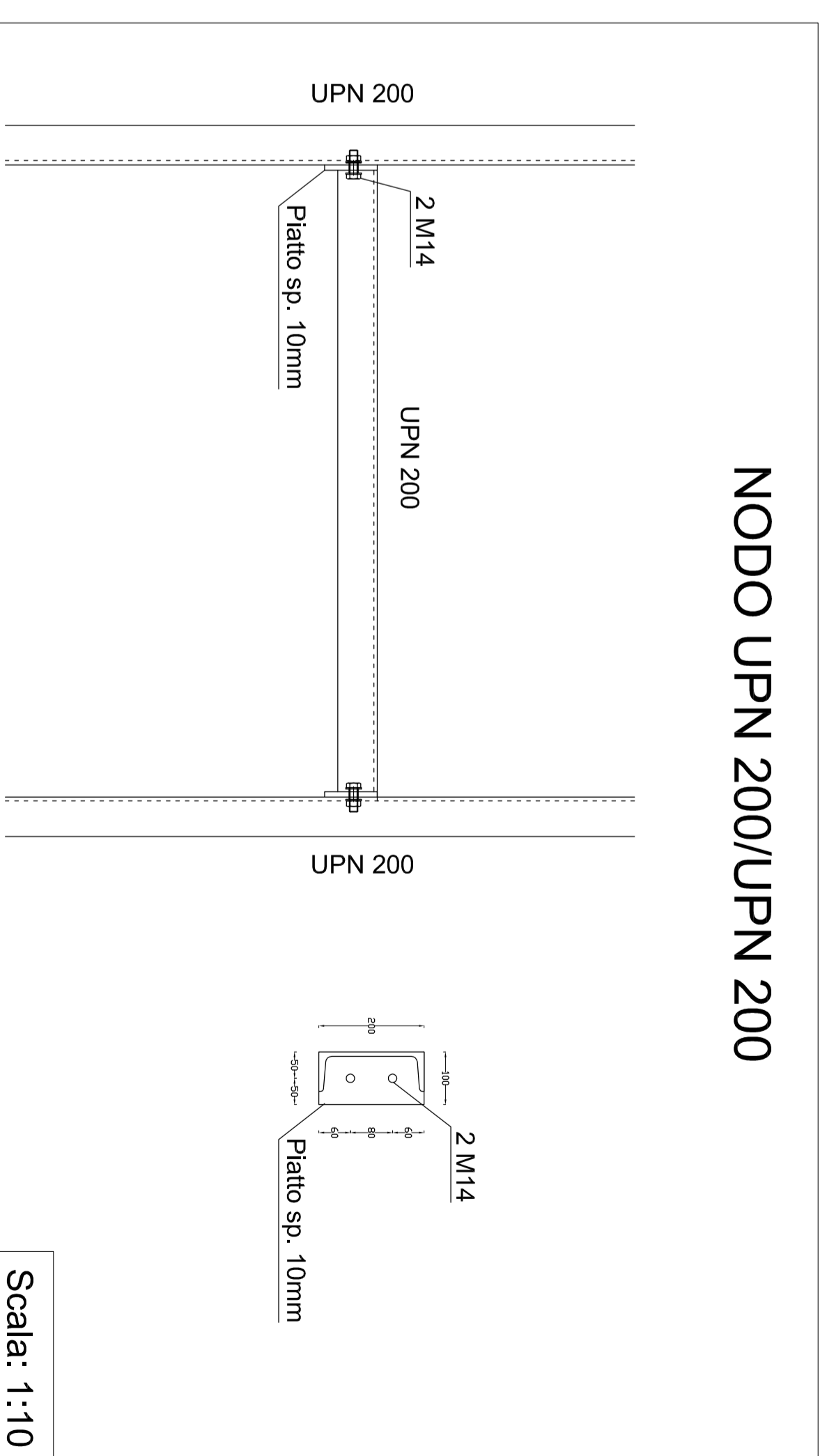
NODO CONTRIVENTI TELAI 1/3



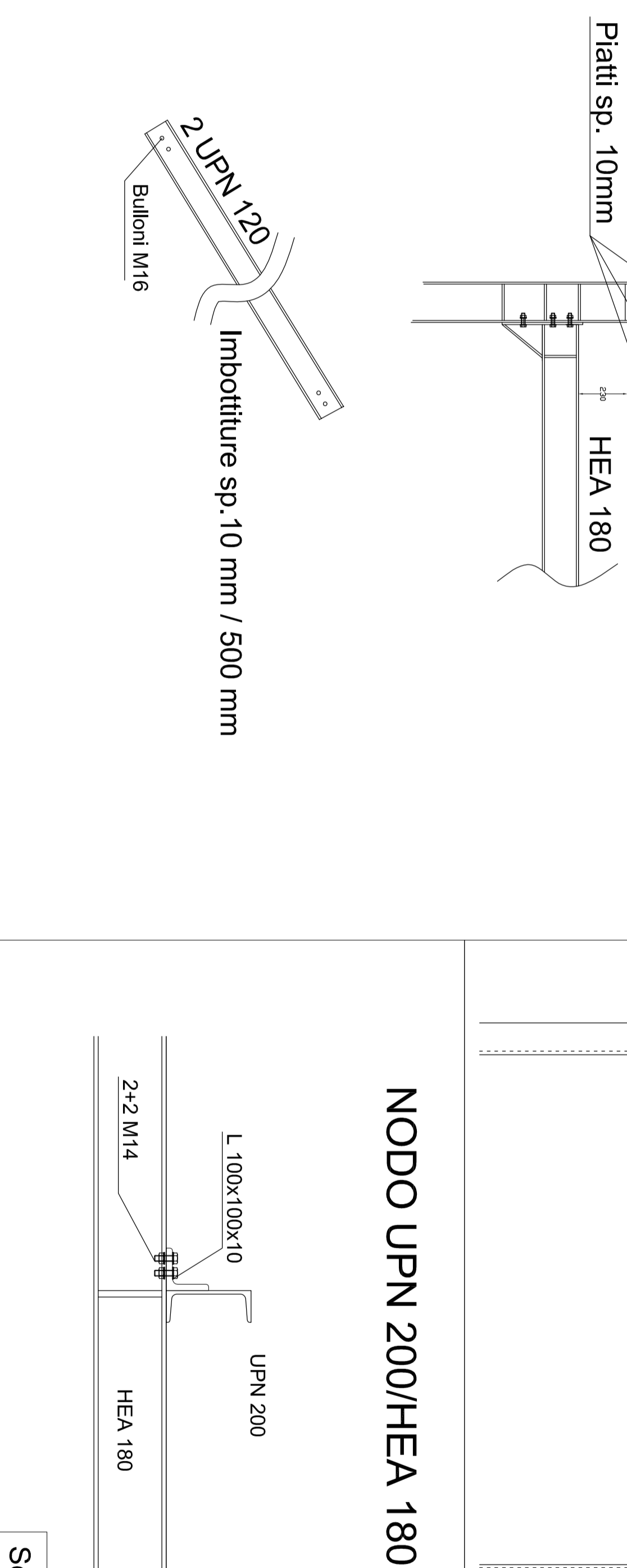
NODO HEA200/HEA180 TELAI 1_2_3



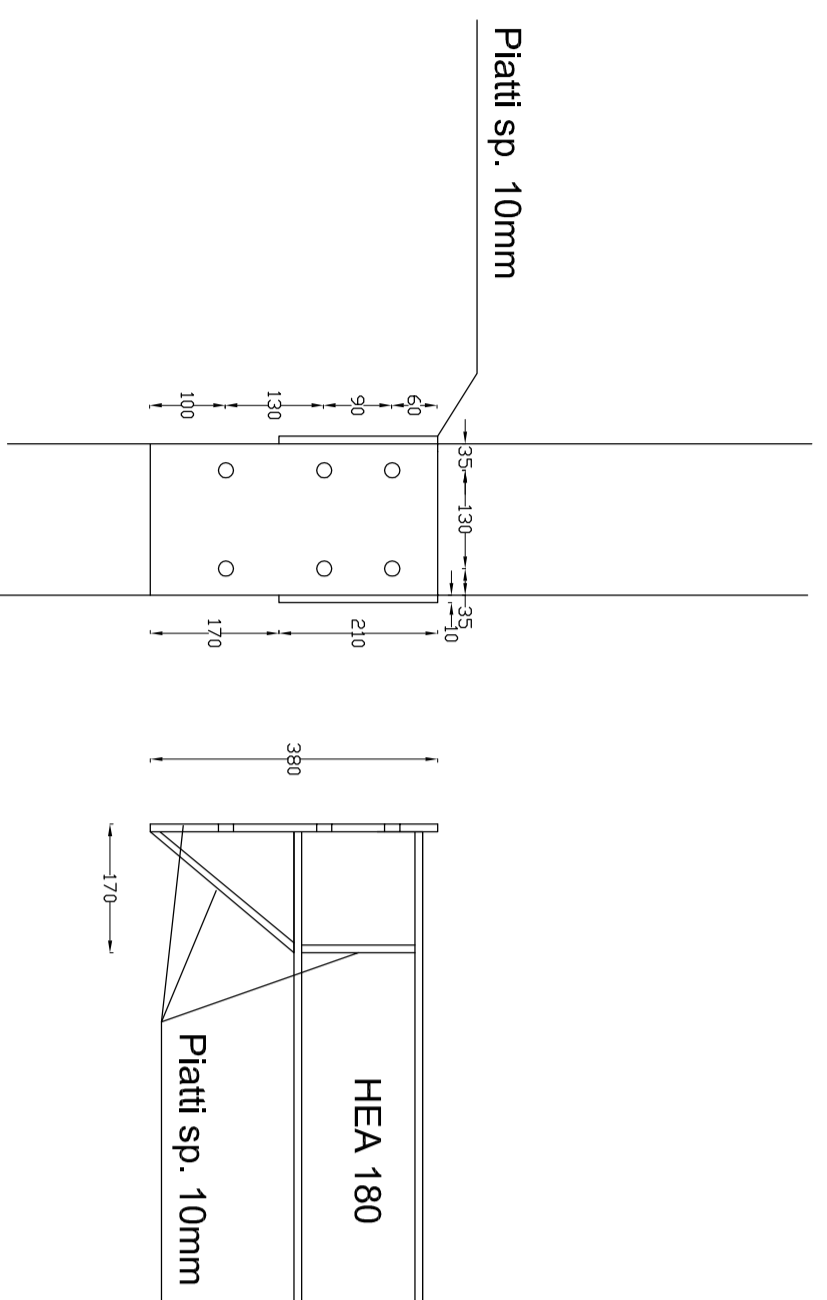
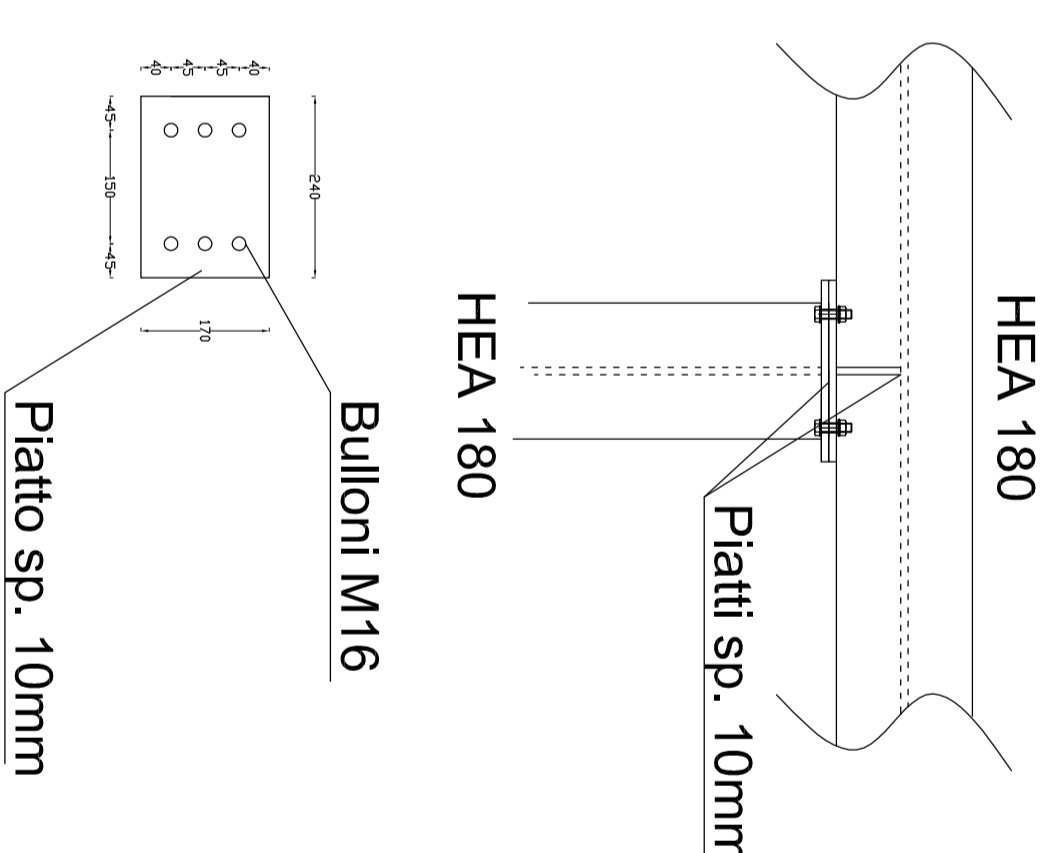
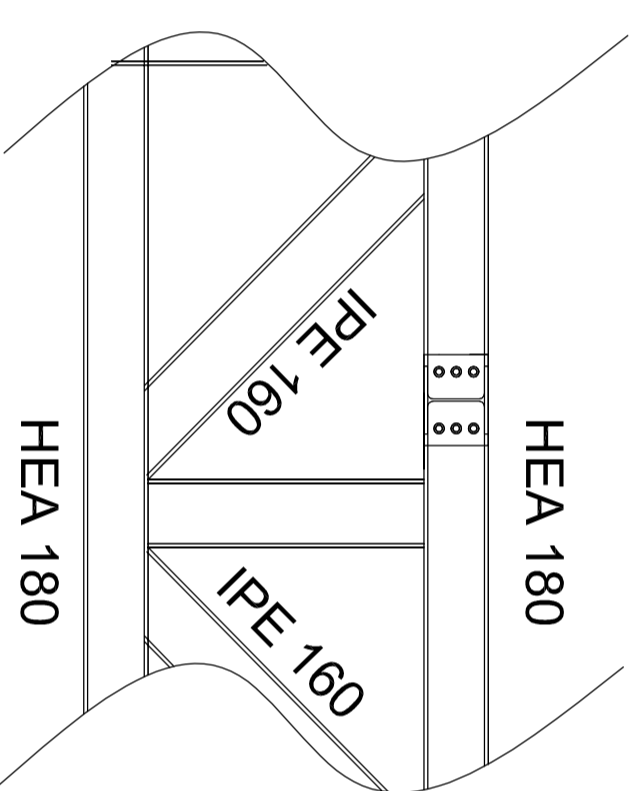
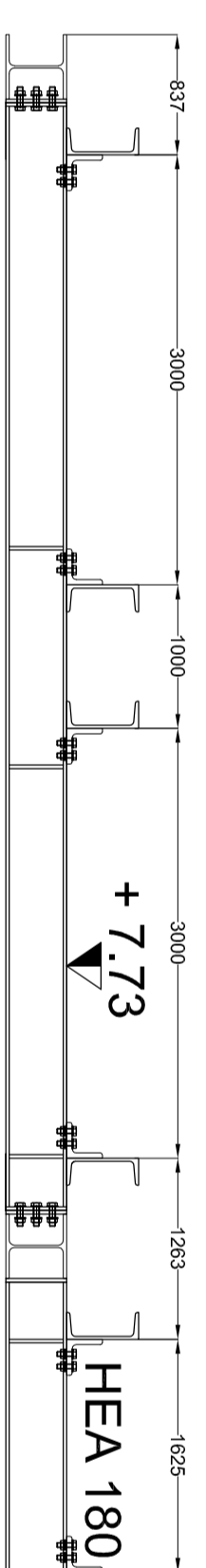
NODO UPN 200/UPN 200



NODO UPN 200/HEA 180



NODO HEA180/HEA180 TELAO 6



AZIENDA U.S.L. DI PESCARA

Oggetto: LAVORI DI ADEGUAMENTO ALLA NORMATIVA ANTINCENDIO DELLE SCALE DI SICUREZZA DELLE PALAZZINE " DIREZIONE SANITARIA, AMBULATORI E SALA CONFERENZE "

Struttura:

P.O. DI PESCARA - PALAZZINA DIR. SANITARIA



RESPONSABILE DEL PROCEDIMENTO:
Ing. Vincenzo Lo Mble
PROGETTISTA & DIRETTORE DEI LAVORI:
Ing. Domenico Mascandaro
COLLAUDATORE:
Ing. Luigi Lauricò
COORDINATORE DELLA SICUREZZA
Geom. Alessandro Di Giovanni

ELABORATO: PARTICOLARI COSTRUTTIVI

Visiti ed autorizzazioni:

Scala: 1:10

Scala: 1:10

TAV. N. Scale:

Nota: Verificare le misure e le quote in cantiere

Identificazione File

Data: 03/09/2014
Agg.:

4/A 1:20